

PROJECT SCHEDULE

SECTION 3.1.8.6

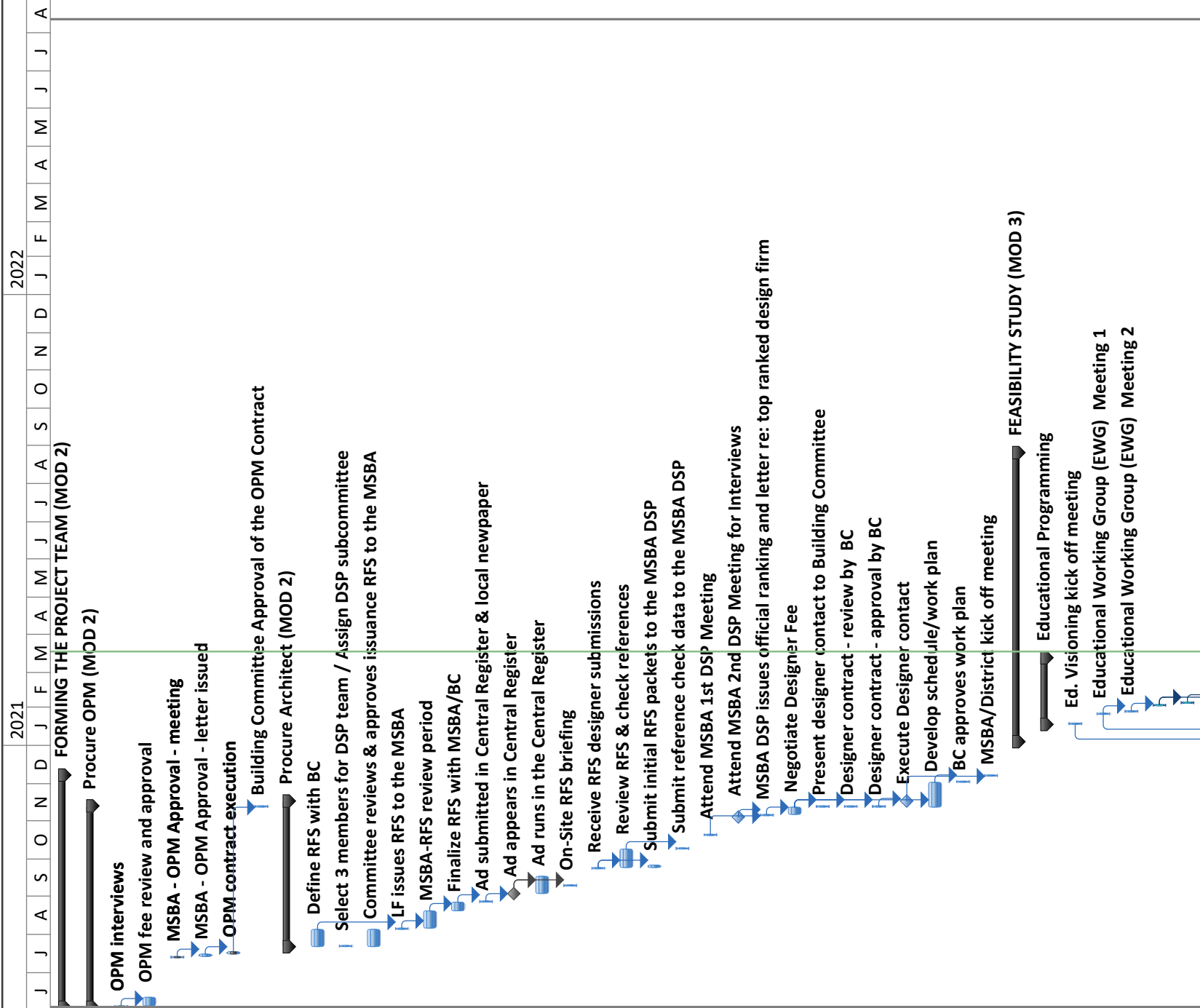
PRELIMINARY DESIGN PROGRAM, MARCH 2021

(PAGE LEFT INTENTIONALLY BLANK)

Tyngsborough Middle School Feasibility Study Project Schedule - PDP Submission



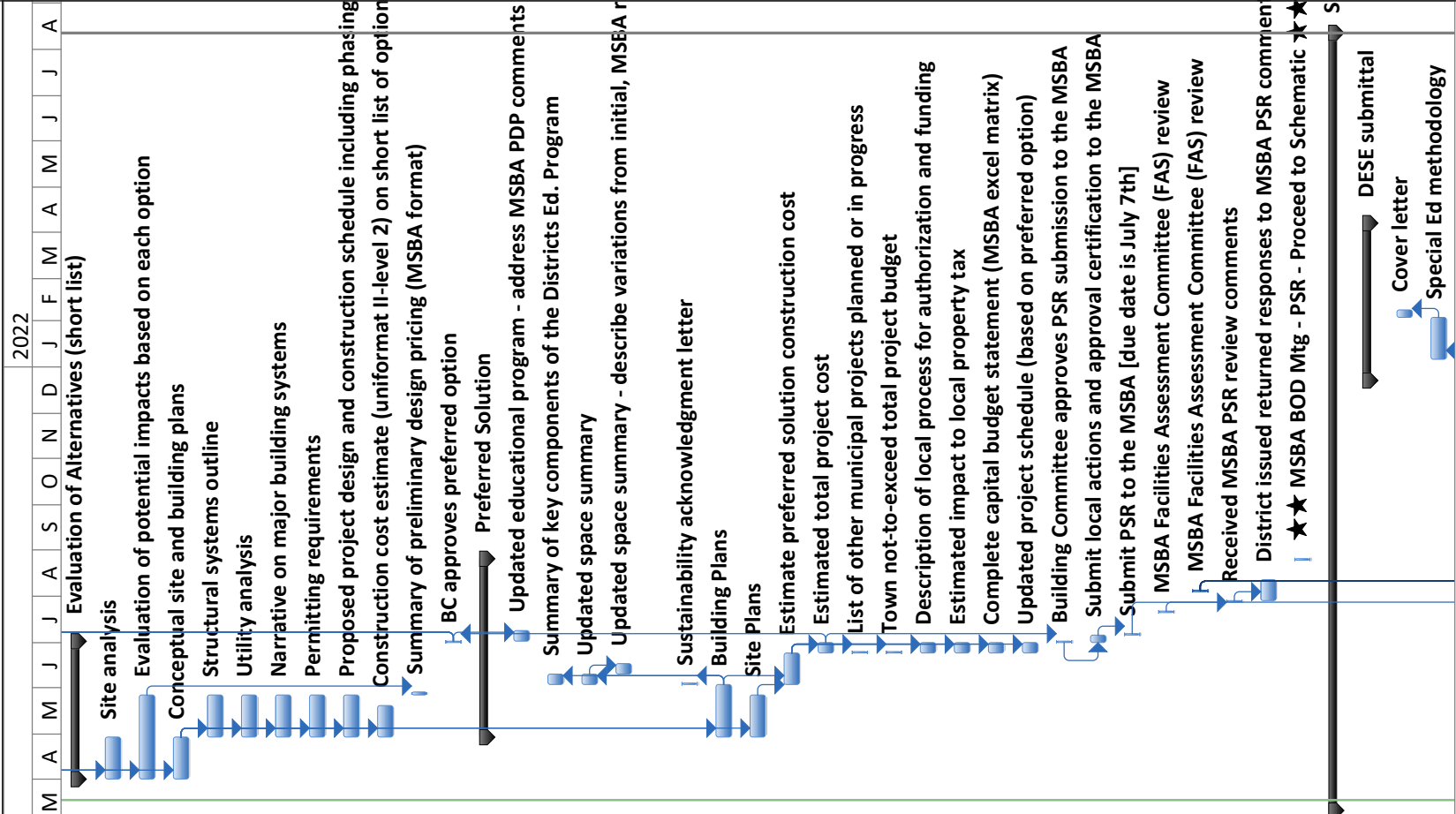
ID	% Complete	Task Name	Duration	Start	Finish
1	100%	FORMING THE PROJECT TEAM (MOD 2)	134 days	Wed 6/3/20	Mon 12/7/20
2	100%	Procure OPM (MOD 2)	117 days	Wed 6/3/20	Thu 11/12/20
3	100%	OPM interviews	1 day	Wed 6/3/20	Wed 6/3/20
4	100%	OPM fee review and approval	5 days	Thu 6/4/20	Wed 6/10/20
5	100%	MSBA - OPM Approval - meeting	1 day	Mon 7/13/20	Mon 7/13/20
6	100%	MSBA - OPM Approval - letter issued	2 days	Tue 7/14/20	Wed 7/15/20
7	100%	OPM contract execution	2 days	Thu 7/16/20	Fri 7/17/20
8	100%	Building Committee Approval of the OPM Contract	1 day	Thu 11/12/20	Thu 11/12/20
9	100%	Procure Architect (MOD 2)	84 days	Wed 7/22/20	Mon 11/16/20
10	100%	Define RFS with BC	10 days	Wed 7/22/20	Tue 8/4/20
11	100%	Select 3 members for DSP team / Assign DSP subcommittee	1 day	Wed 7/22/20	Wed 7/22/20
12	100%	Committee reviews & approves issuance RFS to the MSBA	10 days	Wed 7/22/20	Tue 8/4/20
13	100%	LF issues RFS to the MSBA	1 day	Wed 8/5/20	Wed 8/5/20
14	100%	MSBA-RFS review period	10 days	Thu 8/6/20	Wed 8/19/20
15	100%	Finalize RFS with MSBA/BC	5 days	Thu 8/20/20	Wed 8/26/20
16	100%	Ad submitted in Central Register & local newspaper	1 day	Thu 8/27/20	Thu 8/27/20
17	100%	Ad appears in Central Register	0 days	Wed 9/2/20	Wed 9/2/20
18	100%	Ad runs in the Central Register	10 days	Thu 9/3/20	Wed 9/16/20
19	100%	On-Site RFS briefing	1 day	Wed 9/9/20	Wed 9/9/20
20	100%	Receive RFS designer submissions	1 day	Wed 9/23/20	Wed 9/23/20
21	100%	Review RFS & check references	11 days	Thu 9/24/20	Thu 10/8/20
22	100%	Submit initial RFS packets to the MSBA DSP	2 days	Thu 9/24/20	Fri 9/25/20
23	100%	Submit reference check data to the MSBA DSP	1 day	Fri 10/9/20	Fri 10/9/20
24	100%	Attend MSBA 1st DSP Meeting	1 day	Tue 10/20/20	Tue 10/20/20
25	100%	Attend MSBA 2nd DSP Meeting for Interviews	1 day	Tue 11/3/20	Tue 11/3/20
26	100%	MSBA DSP issues official ranking and letter re: top ranked design firm	1 day	Thu 11/5/20	Thu 11/5/20
27	100%	Negotiate Designer Fee	4 days	Fri 11/6/20	Wed 11/11/20
28	100%	Present designer contact to Building Committee	1 day	Thu 11/12/20	Thu 11/12/20
29	100%	Designer contract - review by BC	1 day	Thu 11/12/20	Thu 11/12/20
30	100%	Designer contract - approval by BC	1 day	Thu 11/12/20	Thu 11/12/20
31	100%	Execute Designer contact	2 days	Fri 11/13/20	Mon 11/16/20
32	100%	Develop schedule/work plan	14 days	Thu 11/12/20	Tue 12/1/20
33	100%	BC approves work plan	1 day	Wed 12/2/20	Wed 12/2/20
34	100%	MSBA/District kick off meeting	1 day	Mon 12/7/20	Mon 12/7/20
35	57%	FEASIBILITY STUDY (MOD 3)	168 days	Mon 1/4/21	Wed 8/25/21
36	100%	Educational Programming	40 days	Mon 1/18/21	Fri 3/12/21
37	100%	Ed. Visioning kick off meeting	1 day	Mon 1/18/21	Mon 1/18/21
38	100%	Educational Working Group (EWG) Meeting 1	1 day	Tue 1/26/21	Tue 1/26/21
39	100%	Educational Working Group (EWG) Meeting 2	1 day	Thu 1/28/21	Thu 1/28/21
40	100%	Educational Working Group (EWG) Meeting 3	1 day	Tue 2/2/21	Tue 2/2/21
41	100%	Educational Working Group (EWG) Meeting 4	1 day	Thu 2/4/21	Thu 2/4/21



Tyngsborough Middle School Feasibility Study Project Schedule - PDP Submission



ID	% Complete	Task Name	Duration	Start	Finish
78	0%	Evaluation of Alternatives (short list)	66 days	Thu 4/1/21	Thu 7/1/21
79	0%	Site analysis	20 days	Thu 4/1/21	Wed 4/28/21
80	0%	Evaluation of potential impacts based on each option	40 days	Thu 4/1/21	Wed 5/26/21
81	0%	Conceptual site and building plans	20 days	Thu 4/1/21	Wed 4/28/21
82	0%	Structural systems outline	20 days	Thu 4/29/21	Wed 5/26/21
83	0%	Utility analysis	20 days	Thu 4/29/21	Wed 5/26/21
84	0%	Narrative on major building systems	20 days	Thu 4/29/21	Wed 5/26/21
85	0%	Permitting requirements	20 days	Thu 4/29/21	Wed 5/26/21
86	0%	Proposed project design and construction schedule including phasing logic	20 days	Thu 4/29/21	Wed 5/26/21
87	0%	Construction cost estimate (uniformat II-level 2) on short list of options	15 days	Thu 4/29/21	Wed 5/19/21
88	0%	Summary of preliminary design pricing (MSBA format)	2 days	Thu 5/27/21	Fri 5/28/21
89	0%	BC approves preferred option	1 day	Thu 7/1/21	Thu 7/1/21
90	0%	Preferred Solution	85 days	Thu 4/29/21	Wed 8/25/21
91	0%	Updated educational program - address MSBA PDP comments	5 days	Fri 7/2/21	Thu 7/8/21
92	0%	Summary of key components of the Districts Ed. Program	5 days	Thu 6/3/21	Wed 6/9/21
93	0%	Updated space summary	5 days	Thu 6/3/21	Wed 6/9/21
94	0%	Updated space summary - describe variations from initial, MSBA review of PDP.	5 days	Thu 6/10/21	Wed 6/16/21
95	0%	Sustainability acknowledgment letter	1 day	Thu 6/3/21	Thu 6/3/21
96	0%	Building Plans	25 days	Thu 4/29/21	Wed 6/2/21
97	0%	Site Plans	20 days	Thu 4/29/21	Wed 5/26/21
98	0%	Estimate preferred solution construction cost	15 days	Thu 6/3/21	Wed 6/23/21
99	0%	Estimated total project cost	5 days	Thu 6/24/21	Wed 6/30/21
100	0%	List of other municipal projects planned or in progress	1 day	Thu 6/24/21	Thu 6/24/21
101	0%	Town not-to-exceed total project budget	1 day	Thu 6/24/21	Thu 6/24/21
102	0%	Description of local process for authorization and funding	5 days	Thu 6/24/21	Wed 6/30/21
103	0%	Estimated impact to local property tax	5 days	Thu 6/24/21	Wed 6/30/21
104	0%	Complete capital budget statement (MSBA excel matrix)	5 days	Thu 6/24/21	Wed 6/30/21
105	0%	Updated project schedule (based on preferred option)	5 days	Thu 6/24/21	Wed 6/30/21
106	0%	Building Committee approves PSR submission to the MSBA	1 day	Thu 7/1/21	Thu 7/1/21
107	0%	Submit local actions and approval certification to the MSBA	3 days	Thu 7/1/21	Mon 7/5/21
108	0%	Submit PSR to the MSBA [due date is July 7th]	1 day	Tue 7/6/21	Tue 7/6/21
109	0%	MSBA Facilities Assessment Committee (FAS) review	1 day	Wed 7/21/21	Wed 7/21/21
110	0%	MSBA Facilities Assessment Committee (FAS) review	1 day	Wed 8/4/21	Wed 8/4/21
111	0%	Received MSBA PSR review comments	1 day	Wed 7/28/21	Wed 7/28/21
112	0%	District issued returned responses to MSBA PSR comments	10 days	Thu 7/29/21	Wed 8/11/21
113	0%	★ MSBA BOD Mtg - PSR - Proceed to Schematic ★★	1 day	Wed 8/25/21	Wed 8/25/21
114	0%	SCHEMATIC DESIGN (MOD 4)	371 days	Thu 3/11/21	Thu 8/11/22
115	0%	DESE submittal	75 days	Thu 12/23/21	Wed 4/6/22
116	0%	Cover letter	3 days	Thu 2/3/22	Mon 2/7/22
117	0%	Special Ed methodology	20 days	Thu 1/6/22	Wed 2/2/22



Thu 3/18/21

(PAGE LEFT INTENTIONALLY BLANK)